


>>> OPTION ONE <<<

Through the Internet Explorer Address Bar

NOTE: If Internet Explorer recognizes a webpage that is not compatible, you will see the Compatibility View icon button  on the Address bar.

1. To Turn On Compatibility View for a Website in Internet Explorer

A) Click/tap on the unhighlighted Compatibility View icon button. (See screenshot below)

NOTE: The webpage will now reload with Compatibility View turned on for it.



2. To Turn Off Compatibility View for a Website in Internet Explorer

A) Click/tap on the highlighted (blue) Compatibility View icon button. (See screenshot below)

NOTE: The webpage will now reload with Compatibility View turned off for it.



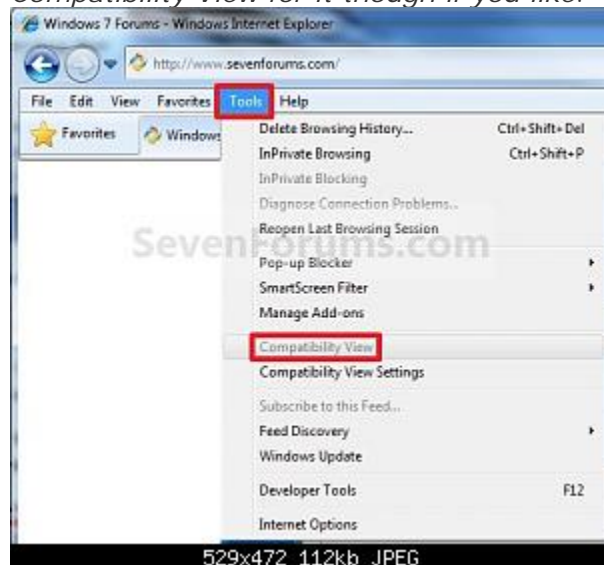
>>> OPTION TWO <<<

Through the Tools Menu

NOTE: This will let you turn on or off Compatibility View for the current webpage.

1. Click/tap on the **Tools Menu Bar** (ALT+T) item. (See screenshot below)

NOTE: If **Compatibiliy View** is grayed out, then the webpage has no compatibility issues and does not need to have Compatibility View turned on for it. You can still use **METHOD THREE** below to turn on Compatibility View for it though if you like.

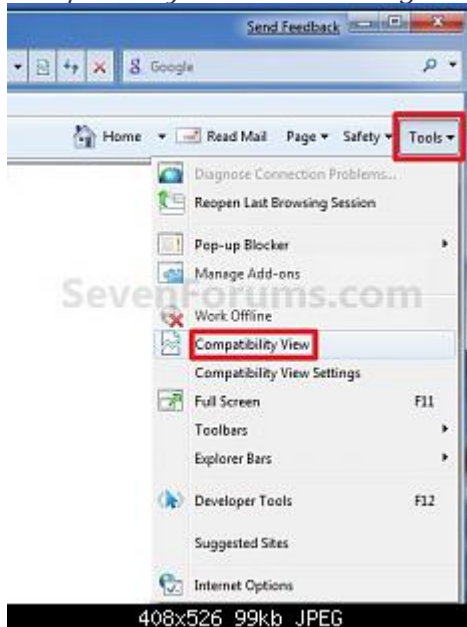


A) Go to step 3.

OR

2. Click/tap on the **Tools** [Command Bar](#) button. (See screenshot below)

NOTE: If **Compatibiliy View** is grayed out, then the webpage has no compatibility issues and does not need to have Compatibility View turned on for it. You can still use **METHOD THREE** below to turn on Compatibility View for it though if you like.



3. To Turn On Compatibility View for a Website in Internet Explorer

A) Click/tap on **Compatibiliy View** to check it. (See screenshots above)

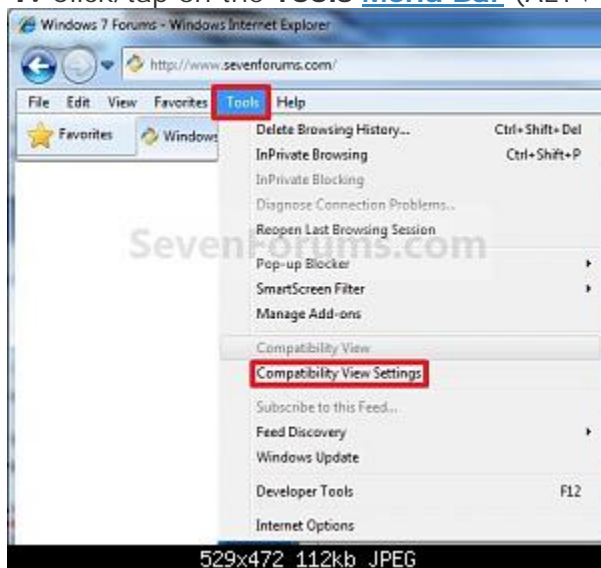
NOTE: The webpage will now reload with Compatibility View turned on for it.

OPTION THREE

Through Compatibiliy View Settings

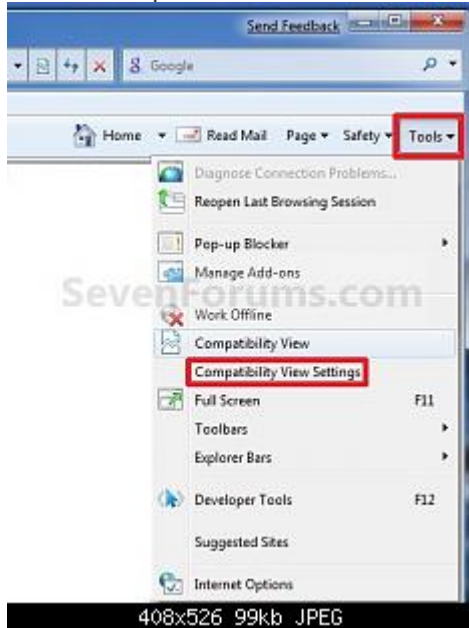
NOTE: This will let you turn on or off Compatibility View for a webpage by adding or removing the webpage address from the Compatibility View list.

1. Click/tap on the **Tools** [Menu Bar](#) (ALT+T) item, and go to **step 3** below. (See screenshot below)



OR

2. Click/tap on the **Tools Command Bar** button. (See screenshot below)

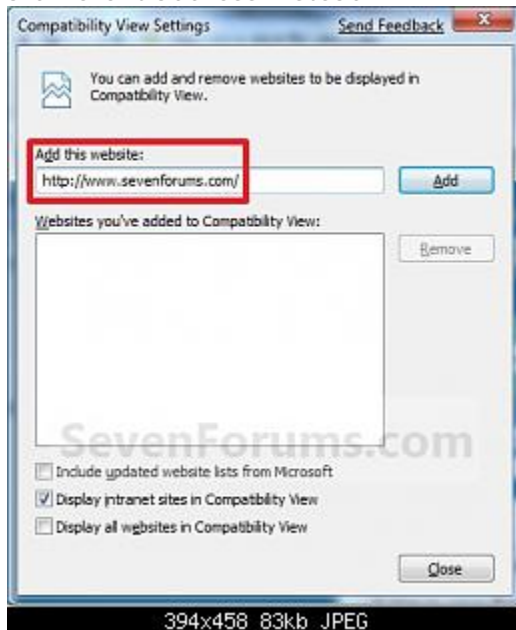


3. Click/tap on **Compatibility View Settings**. (See screenshots above)

4. To Add a Website to the Compatibility View List in Internet Explorer

A) Type in the webpage address that you want to turn on Compatibility View for, and click/tap on the **Add** button. (See screenshot below)

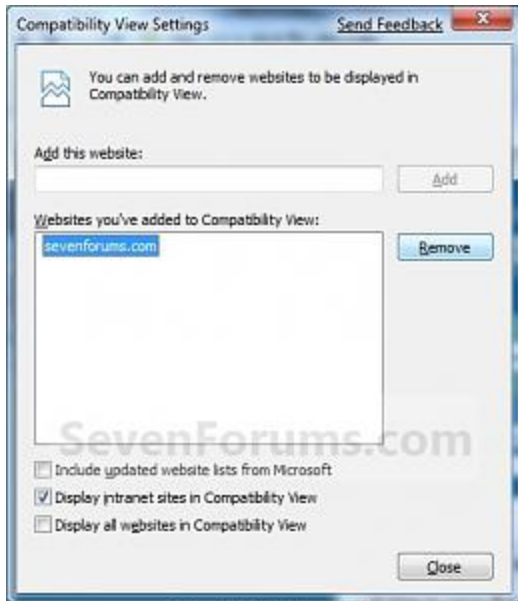
NOTE: The current webpage address will automatically be filled in for you. Just clear it if you want to add a different address instead.



B) Go to step 6.

5. To Remove a Website from the Compatibility View List in Internet Explorer

A) Select a listed webpage address that you want to turn off Compatibility View for, and click/tap on the **Remove** button. (See screenshot below)



394x458 79kb JPEG

6. Click/tap on the **Close** button. (See screenshots above)